

SAGE ADVICE

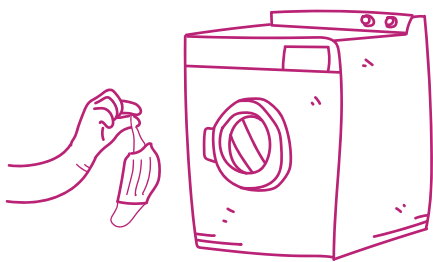
ON FACE COVERINGS



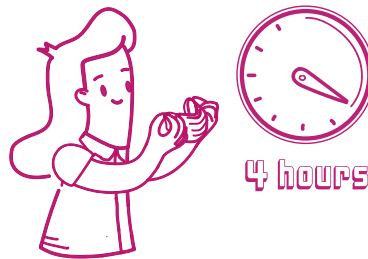
Face coverings are compulsory on public transport across the country, as well as in retail locations and certain other indoor settings, such as banks and post offices



Ministers are said to be debating whether to enforce stricter measures during lockdown 3.0 with masks potentially being required outdoors



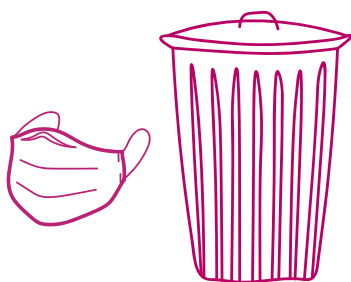
Only 12% of us are washing reusable face coverings correctly



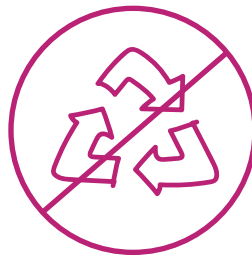
It is recommended that you change your mask every 4 hours and take into consideration a daily commute so should have a wash, wear and a spare as a minimum



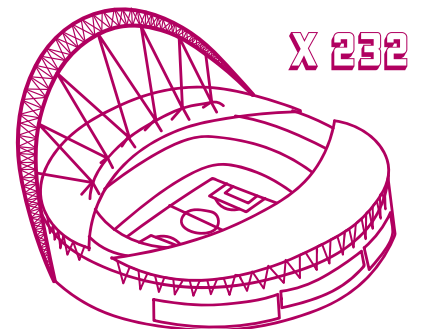
34% of us wear a mask more than four times before washing them



More than 50% of us who wear disposable face masks are using them numerous times, instead of disposing of them after use



Nearly 70% of those who wear disposable masks are unaware they are single-use plastic



102 million masks are binned each week - enough to cover the pitch at Wembley Stadium 232 times over

Source: Scientific Advisory Group for Emergencies (SAGE), North London Waste Authority (NLWA) Research Report